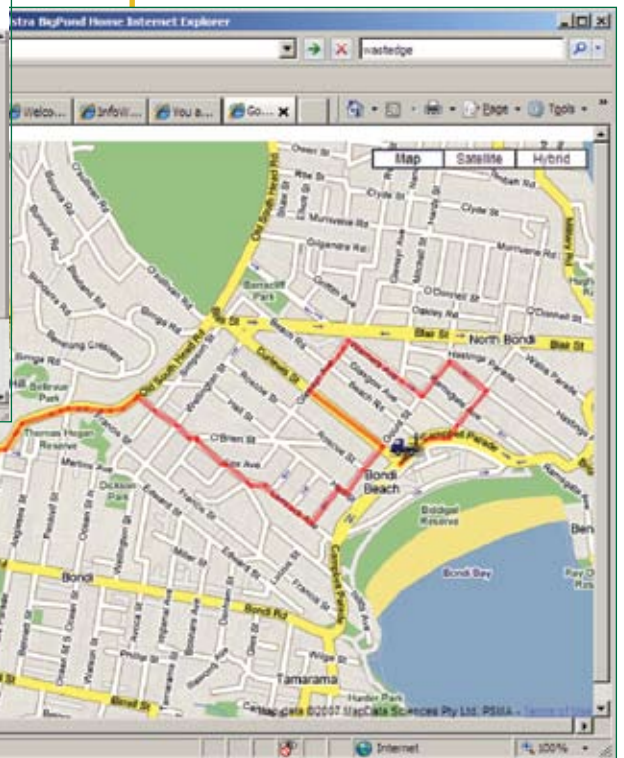
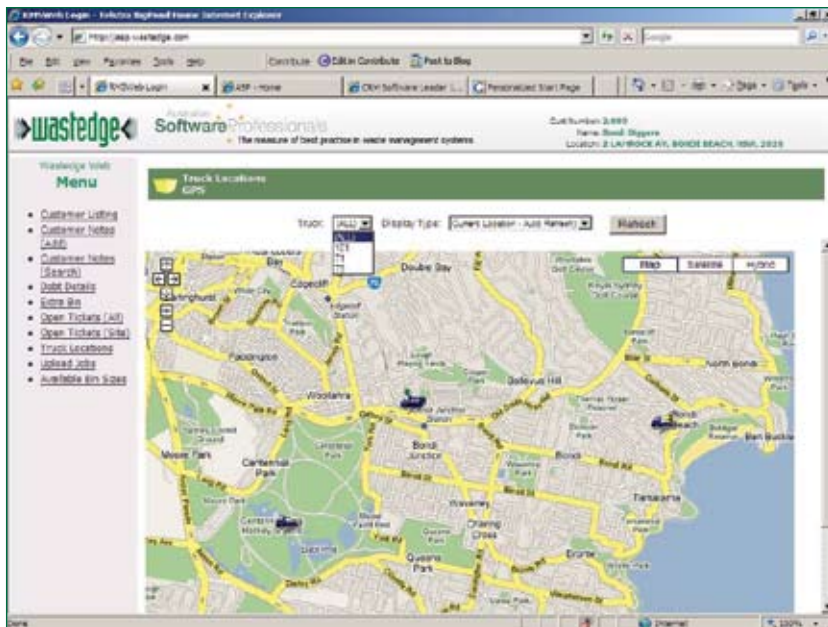


WasteMapGPS

WasteGPS is a Wastedge module that offers a web service that you can view in Google Map format, to see where your trucks are at any point in time. Also you can see where they've been and replay their travel trails.



WaveOn 606 v2 Mobile Data Acquisition



This module is based on installation of a GPS device (like the P606 pictured) that can send GPS signals back from the truck via a GPRS phone chip inserted in the black box.

This low cost GPS hardware is easy to install and uses built in GPRS phone chip to transmit GPS data streams at user defined intervals back to base.

Internet access to displays means designated users can log-in from anywhere to see where resources are at any time. This module can be used as a stand alone tracking facility or combined with GIS module data to relate to where customers and jobs are on the same map.

Features/Functionality Supported

- Select Trucks to display
- Show Current location (selected trucks)
- Show last 3 locations
- Show static route trails
- Show stopping points greater than XX minutes
- Show selected job locations
- Show Disposal Site Locations
- Show customer sites in area

Business Benefits:

- Able to see where trucks are so you can allocate work appropriately
- Able to see where drivers stopped for any length of time
- Highlights travel inefficiencies
- Helps prevent driver crossover
- Highlights unscheduled stop points

Performance Measures

- Provides travel distance data
- Measures waiting / stop times
- Provides location travel times for historic averaging
- Provides active hours data
- Enables speed monitoring

Try a testdrive today at www.wastedge.com



Cutting edge frontline systems for the waste industry